



EAPII, EAPII Polyclonal Antibody

For Research Use Only. Not for Diagnostic or Therapeutic Use.

Purchase does not include or carry any right to resell or transfer this product either as a stand-alone product or as a component of another product. Any use of this product other than the permitted use without the express written authorization of Allele Biotech is strictly prohibited

Ets proteins constitute a family of conserved sequence-specific DNA-binding proteins and function as transcription factors with roles in differentiation, lymphoid cell development, invasiveness and angiogenesis. A novel ETS1 interacting protein designated as ETS1-associated protein II (EAPII) interacts with ETS1 and other Ets proteins (ETS2 and FLI1) and is a novel ETS1 modulator.

Buffers

0.1 mg in 0.1 ml (1 mg/ml) in PBS containing 0.02% sodium azide.

Immunogen

Reacts with residues 11-28 (REAAEEEEGEPEVKKRRL) of human EAPII.

Application

WB: 1:1,000

Storage

Maintain refrigerated at 2-8°C for up to 6 months. For long term storage store at -20°C. Avoid repeated freeze-thaw cycles.

Box 1 | Basic Info

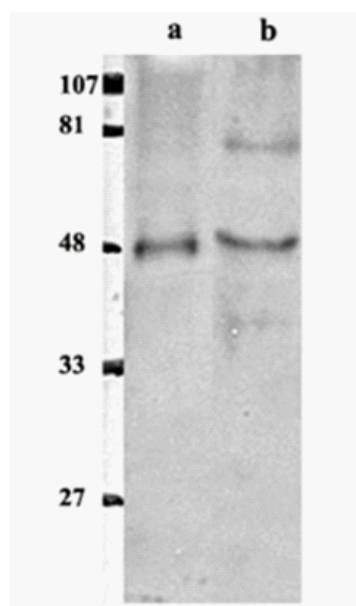
Cat. No.	ABP-PAB-24393
Animal ID	N/A
Host	Rabbit
Reactivity	Human
Format	Affinity Purified
Accession number	N/A
Amount	100 µg

Alternative Name(s):

N/A

References:

1. Pei H, Yordy JS, Leng Q, Zhao Q, Warson DK, and Li R: EAPII interacts with ETS1 and modulates its transcriptional function. *Oncogene*. May 8; 22(18): 2699-709 (2003).



Western blot detection of EAPII antibody in OV2008 human cancer cell line (b) with purified EAPII protein (a) as control. In cell lines, polyclonal often detects higher molecular weight bands representing hom- or hetero-dimers of EAPII.